

Flameproof Exd / Increased Safety Exe Dual Certified ATEX / IECEx

479 Inline Adaptor (Male to Male)



Certification Details

- Increased Safety and Flameproof Exe IIC Gb, Exd IIC Gb, Extb IIIC Db, Ex II 2GD.
- Certificate No's: Baseefa11ATEX0150U and IECEx BAS 11.0072U.
- GOST R certified.
- Operating Temperature Range -60°C to +200°C.
- Group II and III.

General Information

- Manufactured in Brass, Nickel Plated Brass, Aluminium, Steel, Nickel Plated Steel and Stainless Steel.
- M16 to M75 as standard.
- Other thread options available on request, including BSPP, PG, NPT, ET and NPSM.
- Suitable for use in Zone 1, Zone 2, Zone 21 and Zone 22.
- Construction and Test Standards: IEC/EN 60079-0, IEC/EN 60079-1 IEC/EN 60079-7 and IEC/EN 60079-31.
- Ingress Protection: IP66.
- Assembly Instruction Sheet: AI 414.

Note: Different thread sizes and types are permitted each end of the adaptor, a step of one thread size is permitted between the male threads. Where different thread types / sizes are supplied, the overall dimensions of the adaptor may differ from the ones in the table

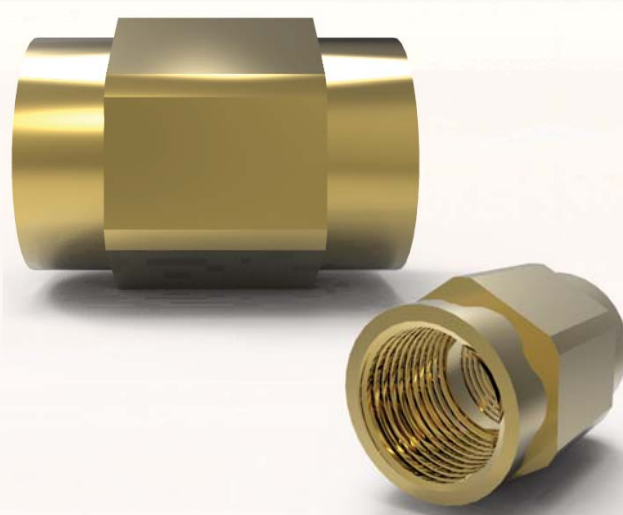
SELECTION TABLE

| Male Thread Size | Thread Pitch (mm) | Male Thread Size | Thread Pitch (mm) | Thread Length (mm) | Across Flats (mm) | Across Corners (mm) |
|------------------|-------------------|------------------|-------------------|--------------------|-------------------|---------------------|
| M16 | 1.5 | M16 | 1.5 | 15 | 24 | 26.5 |
| M20 | 1.5 | M20 | 1.5 | 15 | 30 | 32.5 |
| M25 | 1.5 | M25 | 1.5 | 15 | 36 | 39.5 |
| M32 | 1.5 | M32 | 1.5 | 15 | 46 | 50.5 |
| M40 | 1.5 | M40 | 1.5 | 15 | 55 | 60.6 |
| M50 | 1.5 | M50 | 1.5 | 15 | 65 | 70.8 |
| M63 | 1.5 | M63 | 1.5 | 15 | 80 | 88.0 |
| M75 | 1.5 | M75 | 1.5 | 15 | 95 | 109.5 |

Ordering Example:

| Product | Thread Size | Material | Finish |
|---------|----------------------------|----------|---------------|
| 479 | M32 Male x 1 1/4" NPT Male | Brass | Nickel Plated |

480 Inline Adaptor (Female to Female)



Certification Details

- Increased Safety and Flameproof Exe IIC Gb, Exd IIC Gb, Extb IIIC Db, Ex II 2GD.
- Certificate No's: Baseefa11ATEX0150U and IECEx BAS 11.0072U.
- GOST R certified.
- Operating Temperature Range -60°C to +200°C.
- Group II and III.

General Information

- Manufactured in Brass, Nickel Plated Brass, Aluminium, Steel, Nickel Plated Steel and Stainless Steel.
- M16 to M75 as standard.
- Other thread options available on request, including BSPP, PG, NPT, ET and NPSM.
- Suitable for use in Zone 1, Zone 2, Zone 21 and Zone 22.
- Construction and Test Standards: IEC/EN 60079-0, IEC/EN 60079-1 IEC/EN 60079-7 and IEC/EN 60079-31.
- Ingress Protection: IP66.
- Assembly Instruction Sheet: AI 414.

Note: Different thread sizes and types are permitted each end of the adaptor, a step of one thread size is permitted between the female threads. Where different thread types / sizes are supplied, the overall dimensions of the adaptor may differ from the ones in the table

SELECTION TABLE

| Female Thread Size | Thread Pitch (mm) | Female Thread Size | Thread Pitch (mm) | Thread Length (mm) | Across Flats (mm) | Across Corners (mm) |
|--------------------|-------------------|--------------------|-------------------|--------------------|-------------------|---------------------|
| M16 | 1.5 | M16 | 1.5 | 16 | 24 | 26.5 |
| M20 | 1.5 | M20 | 1.5 | 16 | 30 | 32.5 |
| M25 | 1.5 | M25 | 1.5 | 16 | 36 | 39.5 |
| M32 | 1.5 | M32 | 1.5 | 16 | 46 | 50.5 |
| M40 | 1.5 | M40 | 1.5 | 16 | 55 | 60.6 |
| M50 | 1.5 | M50 | 1.5 | 16 | 65 | 70.8 |
| M63 | 1.5 | M63 | 1.5 | 16 | 80 | 88.0 |
| M75 | 1.5 | M75 | 1.5 | 16 | 95 | 109.6 |

Ordering Example:

| Product | Thread Size | Material | Finish |
|---------|--------------------------------|----------|---------------|
| 479 | M32 Female x 1 1/4" NPT Female | Brass | Nickel Plated |