

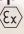
In-Line Swivel Coupling

Flameproof Exd / Increased Safety Exe Dual Certified ATEX / IECEx

490 (M to F) Swivel In-Line Union with Lockstop



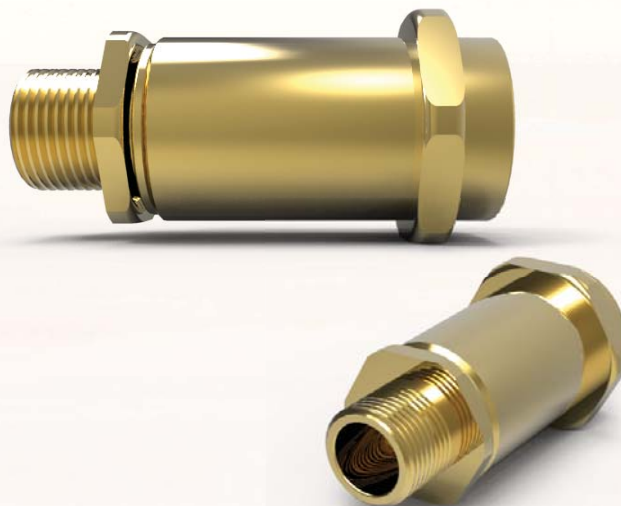
Certification Details

- Increased Safety & Flameproof Exe IMb, Exd IMb, Exe IIC Gb, Exd IIC Gb, Extb IIIC Db,  IM2 / II 2GD.
- Certificate No's: Sira 11ATEX1347U and IECEx SIR 11.0152U.
- Operating Temperature Range -60°C to +100°C.
- Group I, II and III.


General Information

- Manufactured in Brass, Nickel Plated Brass, Steel, Nickel Plated Steel and Stainless Steel.
- M16 to M75 as standard.
- Other parallel male thread options available on request, including BSPP, PG, ET and NPSM.
- NPT female threads can also be supplied in sizes ranging from ½" to 3".
- Suitable for use in Zone 1, Zone 2, Zone 21, Zone 22 and mining applications.
- Construction and Test Standards: IEC/EN 60079-0, IEC/EN 60079-1 IEC/EN 60079-7 and IEC/EN 60079-31.
- Integral Silicone O Ring seal.
- Ingress Protection: IP66.
- Assembly Instruction Sheet: AI 416.

491 (M to F) Swivel In-Line Union



Certification Details

- Increased Safety & Flameproof Exe IMb, Exd IMb, Exe IIC Gb, Exd IIC Gb, Extb IIIC Db,  IM2 / II 2GD.
- Certificate No's: Sira 11ATEX1347U and IECEx SIR 11.0152U.
- Operating Temperature Range -60°C to +100°C.
- Group I, II and III.

General Information

- Manufactured in Brass, Nickel Plated Brass, Steel, Nickel Plated Steel and Stainless Steel.
- M16 to M75 as standard.
- Other thread options available on request, including BSPP, PG, ET, NPSM and NPT.
- NPT female threads can also be supplied in sizes ranging from ½" to 3".
- Suitable for use in Zone 1, Zone 2, Zone 21, Zone 22 and mining applications.
- Construction and Test Standards: IEC/EN 60079-0, IEC/EN 60079-1 IEC/EN 60079-7 and IEC/EN 60079-31.
- Integral Silicone O Ring seal.
- Ingress Protection: IP66.
- Assembly Instruction Sheet: AI 417.

SELECTION TABLE

Male Thread Size	Thread Pitch (mm)	Female Thread Size	Thread Pitch (mm)	Thread Length (mm)	Typical A/F (mm) 'E'	Typical A/C (mm) 'F'
M16	1.5	M16	1.5	16	36	39.5
M20	1.5	M20	1.5	16	36	39.5
M25	1.5	M25	1.5	16	46	50.5
M32	1.5	M32	1.5	16	46	50.5
M40	1.5	M40	1.5	16	65	70.8
M50	1.5	M50	1.5	16	65	70.8
M63	1.5	M63	1.5	16	95	104.0
M75	1.5	M75	1.5	16	95	104.0

Note: Different thread sizes and types are permitted each end of the elbow, a step of one thread size is permitted between the two threads. Where different thread types / sizes are supplied, the overall dimensions of the inline swivel may increase in size.

Ordering Example:

Product	Thread Size	Pitch	Material	Finish
490	M32 Male x M32 Female	1.5 mm	Brass	Nickel Plated

Always state the male thread first

Ordering Example:

Product	Thread Size	Pitch	Material	Finish
491	M32 Male x M32 Female	1.5 mm	Brass	Nickel Plated

Always state the male thread first